

Knowledge Base Document



Beonic Pty Ltd
ABN 18 091 763 585

141 Gilles Street Adelaide
South Australia

Telephone +61 8 8227 0011
Facsimile +61 8 8227 0022

Internet www.Beonic.com
Email info@Beonic.com

Title	Network Transfer Setup
Brief	Steps to configuring the Enterprise Server - Network transfer across LAN or WAN
Product(s)	Traffic Pro X / Enterprise Server
Key words	Import, Export, Network, RAS, Port, IP, Server
Date Created	12 March 2004
Originator	Mark Pollard
Dissemination	All and Public

DESCRIPTION:

Where a Head Office manages multiple remote locations that are running Network, Retail or Enterprise Traffic Pro software, a solution is available for the remote location's data to be accessed, imported and reported at the Head Office. Data can be exported from the remote site and imported at Head Office via the following methods:

- Internet email
- Dial-up networking (RAS)
- Network
- Disk File sharing through WAN or LAN

This document focuses on the Network method across a WAN or LAN.

ACTION REQUIRED:

There is a "manual" and an "automatic" method to setting up the Server to read the Remote's data through the network method. The automatic method is recommended because it is easier, faster and less problematic. However, it is important to plan deployment of the system, have a standard naming convention for locations and sensors and an installation checklist. This document focuses on the automatic method.

Setup and configuration is done in 2 parts:

- Part 1: Setup and fully configure the Remote Location and establish export parameters.
- Part 2: Setup and fully configure the Server and import parameters for the remote location, this can be done through a shared drive on the network, or via email.

Prior to performing Parts 1 and 2, ensure the following:

- Each Remote Location must be accessible to the server via the network. This means that all computers must be on the same WAN, and have similar IP addresses. You may need to contact your system administrator to verify this, or
- You can check this by seeing if you can "ping" the server from the remote location. To do this you must open a command prompt window, which is usually in the "Start" menu under "Programs" -> "Accessories". You will need to know the computer name of the server, and simply type "ping <server_name>". If this request times out, then the two computers are not visible to each other on the network, and you will need to contact your system administrator.

PRECAUTIONS:

This can only be used when the Server and Remote Computer are visible to each other on a LAN / WAN, see above for more details.

WHAT TO DO:

PART 1 - Configure the Retail Location

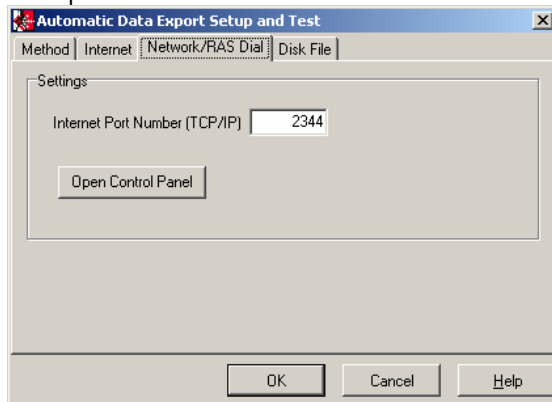
These steps need to be performed on each remote location that you will be collecting from.

1. Setup the location, sensors and sensor groups as per normal.

Setup Export options

2. Select Data > Export > Setup & Test and select the "Network / RAS Dial" option.
3. Click the Network / RAS Dial tab.
4. This number should not need to be changed, however it must be the same on both the remote computer, and the server computer.

Example:



Saving the Remote Location's configuration (Automatic Method)

5. Select System > Retail Location Setup and select the newly created location.
6. Click on the "Save Config" button to save this locations configuration. This will speed up the process of setting up the corresponding import location at the Head Office. The resulting file is very small and can easily be saved to a floppy, network share, or emailed so that it can be used at Head Office.

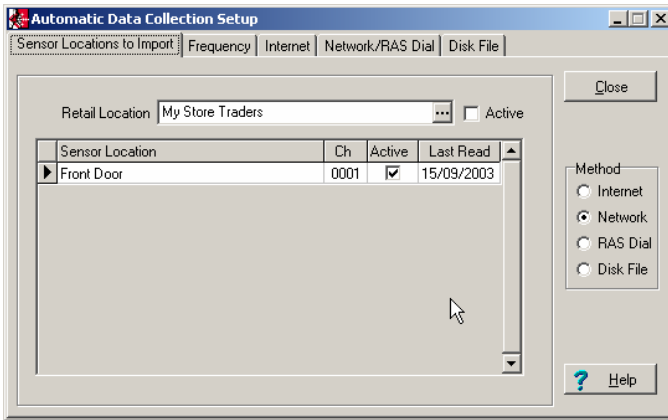
PART 2 – Configure Head Office

These steps are to be performed on the Head Office Enterprise Server software for each of the remote locations you will be importing.

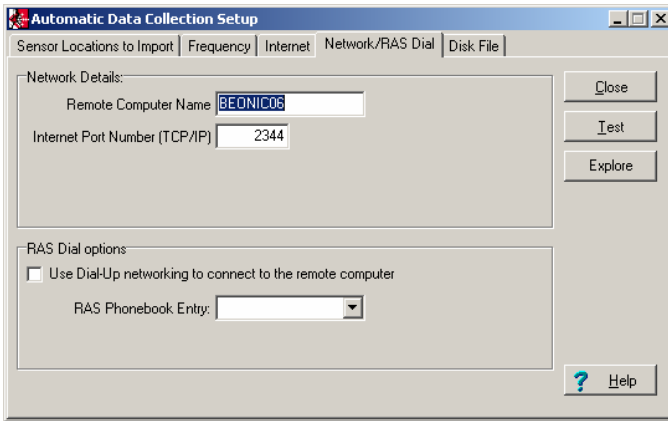
An 'Import' type retail location, based on the remote location, is required to be setup to allow the exported remote data to be viewed at Head Office. Setting up the remote location (as an "Import" type) does not deliver any traffic data – it just prepares the system for the automatic import of such data (from the remote location).

1. Select System > Autoconfigure Import Location. You will then be prompted for the remote configuration file you saved earlier (Part 1 - Steps 6 & 7). The system will create an import type retail location, plus configure all sensor locations, names, IDs and groups for you and will leave the Import location ready for use.
2. Go to Data > Collection > Setup & Test, and choose the location you have just imported, it should have the Import type.

3. On the left hand side of this screen there is a Method selection, which should be set to Network.



If you click on the Network/RAS Dial tab you can test the connection by using the Test button. If you are unable to establish a connection, ensure the Port Number matches please refer to Part 2 of the Action Required section above in this document.



4. Now click on Frequency, and set the collection period, and your data will be automatically collected through the network.

OTHER INFO:

For more information and pictorials, see the Traffic Pro User Guide.