

Knowledge Base Document



Beonic Pty Ltd
ABN 18 091 763 585

141 Gilles Street Adelaide
South Australia

Telephone +61 8 8227 0011
Facsimile +61 8 8227 0022

Internet www.Beonic.com
Email info@Beonic.com

Title	Disk File Transfer Setup
Brief	Steps in configuring the Enterprise Server - Client Disk File transfer across a LAN or WAN.
Product(s)	Traffic Pro 3000/X Enterprise Server
Key words	Server, file, disk, transfer, client, export, import, headquarters, HQ, configuration, setup, configure, location
Date Created	Tuesday, 29 October 2002
Originator	Justin McDonald
Dissemination	All and Public

DESCRIPTION:

Where a Head Office manages multiple remote locations that are running Network, Retail or Enterprise Traffic Pro software, a solution is available for the remote location's data to be accessed, imported and reported at the Head Office. Data can be exported from the remote site and imported at Head Office via the following methods:

- Internet email
- Dial-up networking (RAS)
- Disk File sharing through WAN or LAN

This document focuses on the Disk File method across a WAN or LAN.

ACTION REQUIRED:

There is a "manual" and an "automatic" method to setting up the Server to read the Remote's data disk file. The automatic method is recommended because it is easier, faster and less problematic. However, it is important to plan deployment of the system, have a standard naming convention for locations and sensors and an installation checklist. This document focuses on the automatic method.

Setup and configuration is done in 2 parts:

Part 1: Setup and fully configure the Remote Location and establish export parameters.

Part 2: Setup and fully configure the Server and establish the import parameters for the remote location data file.

Prior to performing Parts 1 and 2, ensure the following:

- As the disk file is written to a location by the remote location and the Head Office system needs to read this file from the same location – Ensure that each PC has access to this location. Observe sharing and permission settings.

PRECAUTIONS:

None known.

WHAT TO DO:

PART 1 - Configure the Retail Location

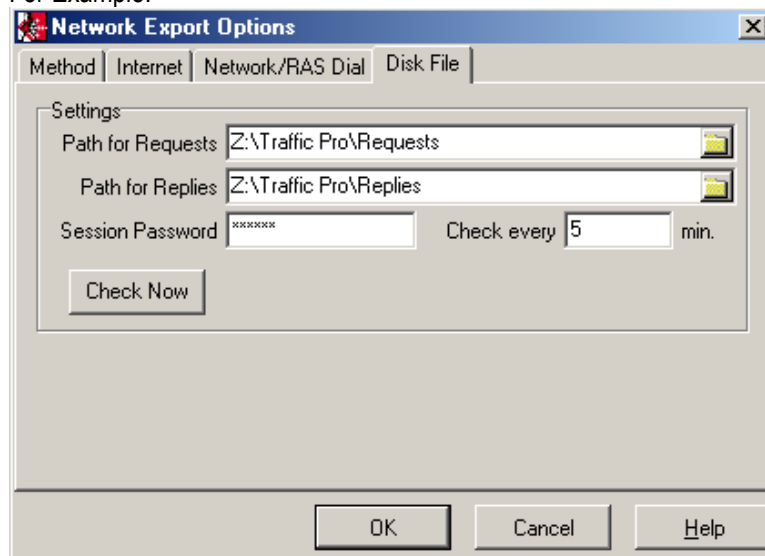
These steps need to be performed on each remote location that you will be collecting from.

1. Setup the location, sensors and sensor groups as per normal.

Setup Export options

2. Select Data > Export > Setup & Test and select the "Disk File" option.
3. Click the Disk File tab.
4. Enter the directory paths for the Request and Reply communication that Traffic Pro will use. The directories may be local (on the Remote PC) or on a network drive pointing back to the Server PC. Both PCs (Head Office and Remote Location) need to be on the same network and be able to read and write to the shared directories.

For Example:



Where "Z:" is a mapped network drive to the "C:" drive on the Server PC, such that on the Server PC, the path C:\Traffic Pro\Requests (and Replies) would exist and the C: drive would be shared.

5. Enter a session password to 'encrypt' the file and set the "Check" interval (usually the default will suffice). Click OK to finish.

Saving the Remote Location's configuration (Automatic Method)

6. Select System > Retail Location Setup and select the newly created location.
7. Click on the "**Save Config**" button to save this locations configuration. This will speed up the process of setting up the corresponding import location at the Head Office.

The resulting file is very small and can easily be saved to a floppy or emailed so that it can be used at Head Office.

PART 2 – Configure Head Office

These steps are to be performed on the Head Office Enterprise Server software for each of the remote locations you will be importing.

An 'Import' type retail location, based on the remote location, is required to be setup to allow the exported remote data to be viewed at Head Office. Setting up the remote location (as an "Import" type) does not deliver any traffic data – it just prepares the system for the automatic import of such data (from the remote location).

1. Select System > Autoconfigure Import Location. You will then be prompted for the remote configuration file you saved earlier (Part 1 - Steps 6 & 7). The system will create an import type retail location, plus configure all sensor locations, names, IDs and groups for you and will leave the Import location ready for use.

Setup import options for Head Office

2. Select Data > Collection > Setup & Test and select the newly created Remote Import Location.
3. Click on the **Frequency** tab. Select how frequent you wish the data to be imported from the Retail Location.

Setup the Import Directory path

4. Click on the "Disk File" tab.
5. Enter the Requests and Replies directory path, which should point to the same destination as the export file for the remote location (PART 1 – Step 4).

For example:



6. Ensure that the "Session Password" is identical between the remote and Head Office systems.

FURTHER APPLICATION:

Consolidated Locations

A consolidated location allows you to group data from many imported locations into one location, providing a global summary. To do this you need to create a new "consolidated type" location on the Head Quarters system and setup its sensor groups.

OTHER INFO:

For more information and pictorials, see the Traffic Pro User Guide.