

Installation Guide

The server installation program installs the **NexusDB® database server (nxServer)**, as well as the **nxServer Admin Utility (nxServerAdmin)**.

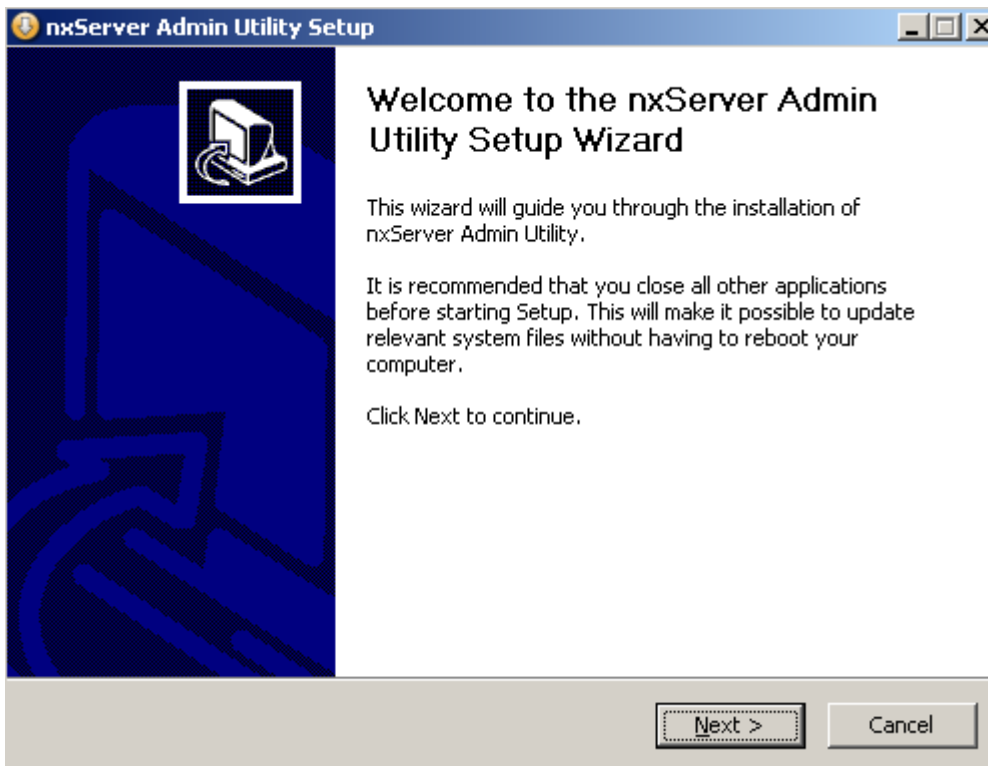
nxServer is a software application that allows database access to client applications on a network. This allows multiple computers on a network to connect to **nxServer** and share common data.

nxServerAdmin is a software utility that controls and monitors the **nxServer** service, and provides automated functions that would typically be performed manually by the database administrator.

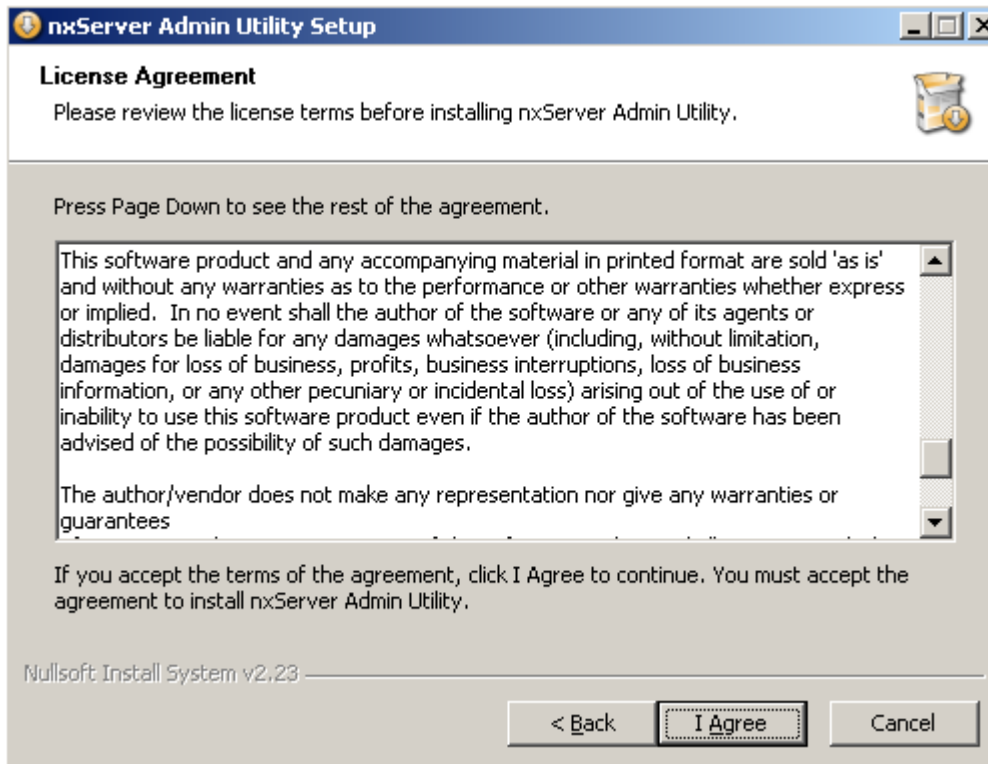
After inserting your installation CD, the installation is automatically started.



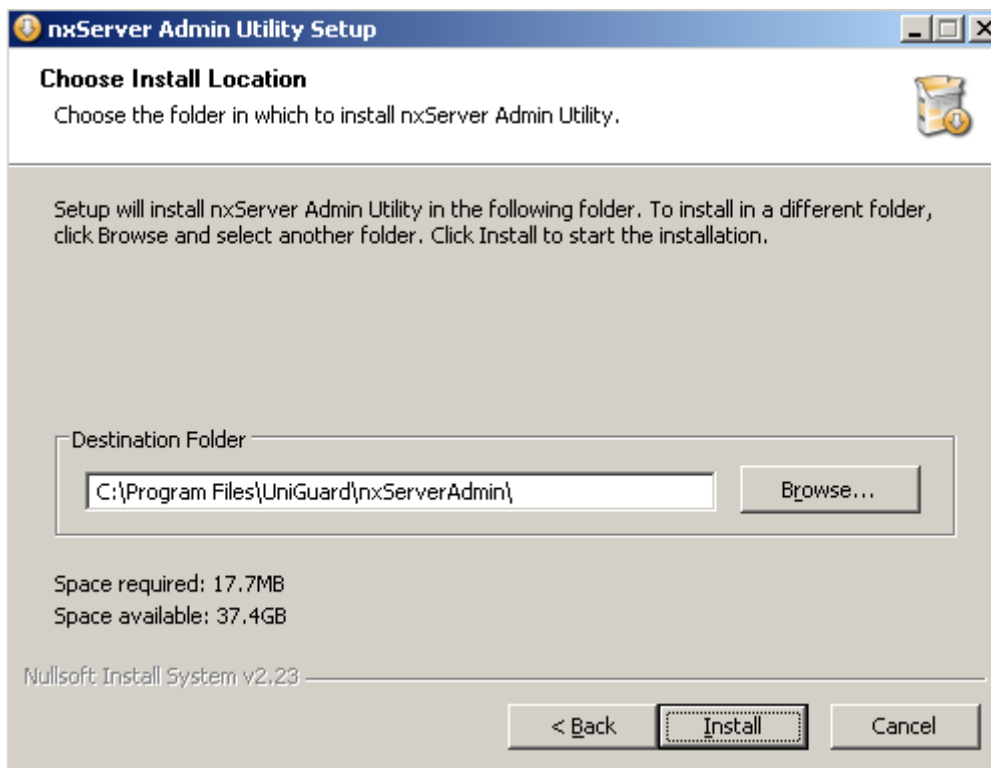
You can either click the **Installation Guide** button to launch this document, or click the **Install Software** button to install **nxServerAdmin** on your computer.



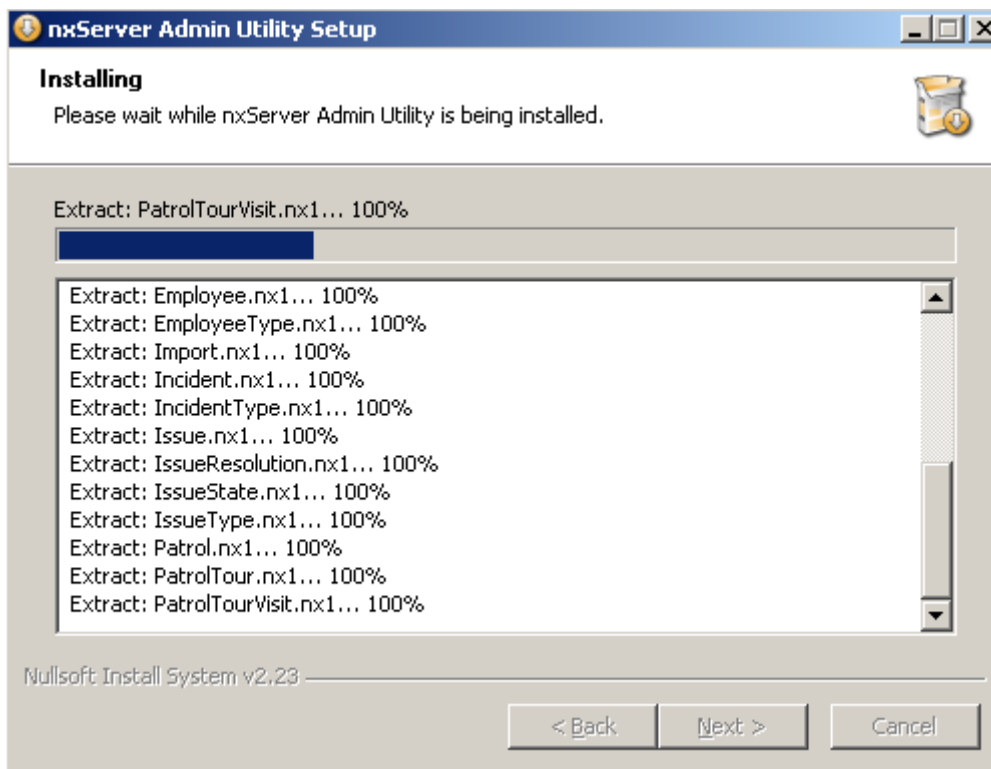
Click the **Next** button to continue...



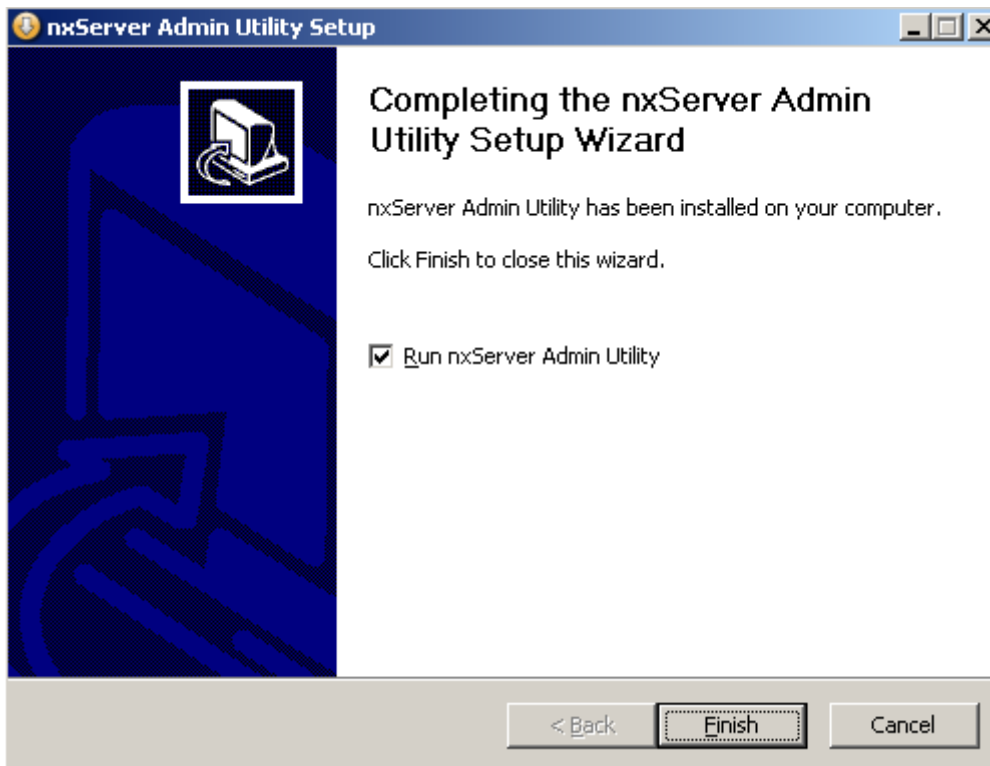
The **End User License Agreement** is displayed, click the **I Agree** button to continue.



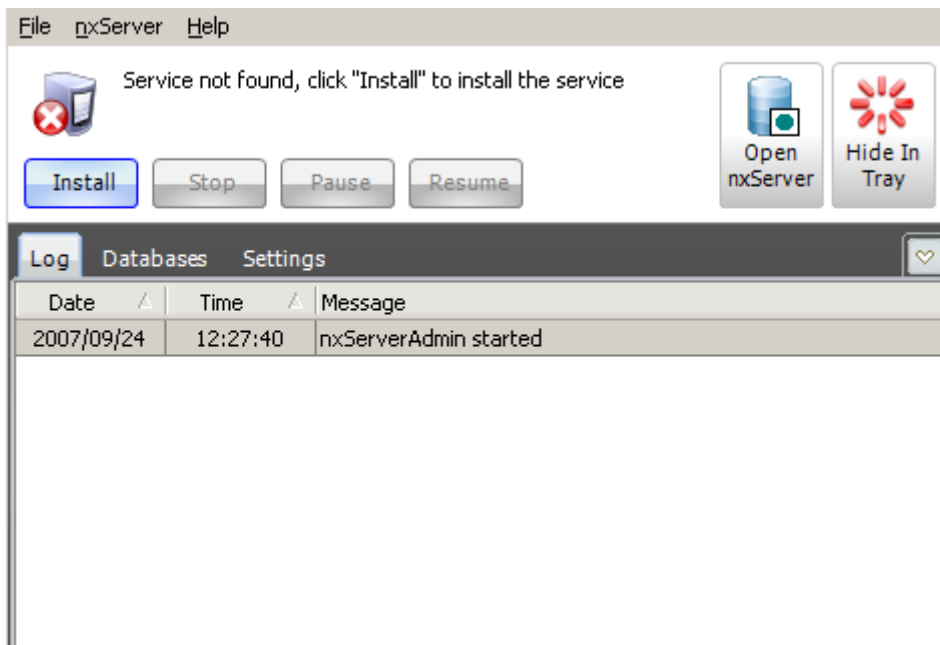
The default installation location is displayed. Click the Browse button to change the location, but only if you know what you are doing. Click the Next button to continue.



The installer displays its progress as it copies all files to the installation location.



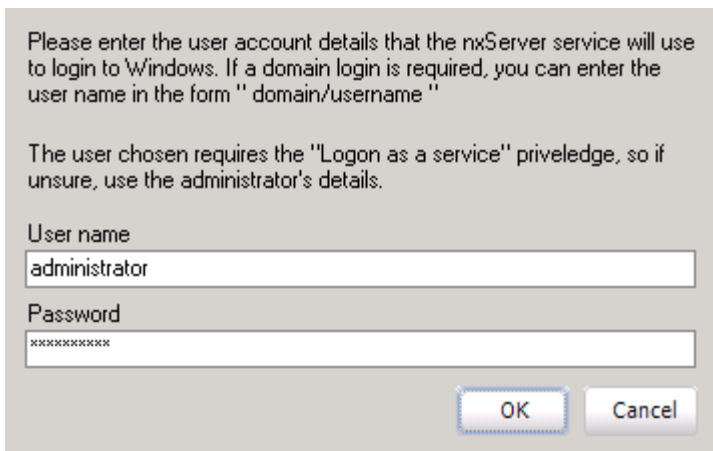
The installation is complete. Click the [Finish](#) button to finish the installation and launch [nxServerAdmin](#).



[nxServerAdmin](#) is opened, and the status control panel displays the message:

'Service not found, click "Install" to install the service'

This tells us that the service is not yet installed as a [Windows Service](#). Click the [Install](#) button.



A window appears, allowing you to enter details for the user that the service will use to logon to Windows. You will need to supply the details of a user that has the 'Logon as service' permission as well as full access rights to the installation folder. If you are unsure, supply the administrator's user name and password.

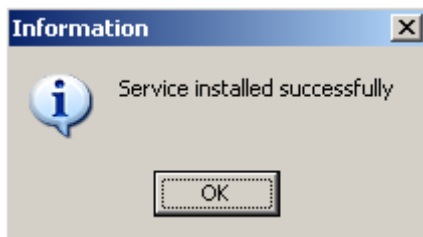
If a domain logon is required, enter the user name in the format 'domain/username', or else just enter the user name.

For example:

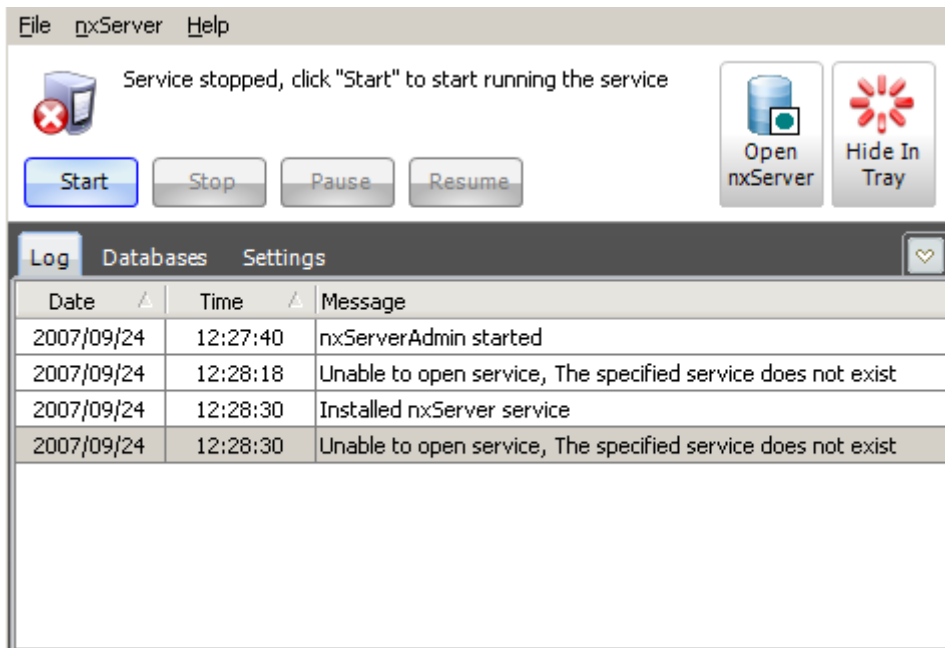
If the user name is 'administrator' and the domain is 'mydomain', enter the user name as 'mydomain/administrator'.

If the user name is administrator and there is no domain required, enter the user name as 'administrator'.

Once the user name and password have been entered, Click the OK button.



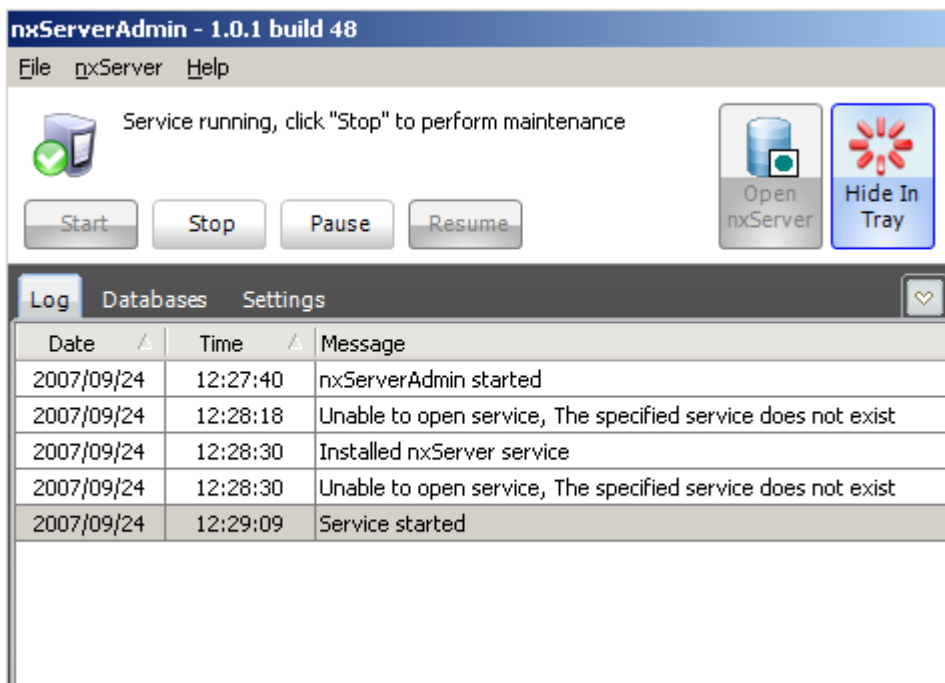
If the service installation is successful, a window appears informing you of this.



The status control panel displays the message:

'Service stopped, click "Start" to start running the service'

This tells us that the service has been successfully installed into the [Windows Service Control Manager](#), and needs to be started in order to run. Click the [Start](#) button.



The service is started and the status control panel now displays the message:

'Service running, click "Stop" to perform maintenance'

This tells us that the service has been successfully started and is running as a [Windows Service](#).

The installation and setup is now complete, and [nxServerAdmin](#) can be hidden in the system tray by clicking the [Hide In Tray](#) button. For further information on using [nxServerAdmin](#) or [nxServer](#), please consult the help documentation by clicking the [Help](#) menu and selecting the appropriate sub-menu option.